

OFFICE FOR LEASE

PROFESSIONAL FIRST CLASS OFFICE SPACE IN EXETER, CA

216 E Pine St, Exeter, CA 93221



Lease Rate

**\$1.25 - 1.50
SF/MONTH**

PROPERTY HIGHLIGHTS

- First Class Medical & Professional Office Space in Exeter, CA
- (2) Economical Office Spaces on Top & Bottom Floor
- Move-In Ready Condition @ Below Market Rates!
- Beautiful Exterior Entrance & Mature Landscaping
- Located Near Professional Offices, Banks, Restaurants & Shopping
- Well-Known Freestanding Office Building
- Private Offices, Various Rooms, Multiple Entrance Points
- Ample Private Parking Lot on All Sides of the Building
- Convenient Location Between CA-65 and CA-198
- Excellent Pine St Presence Surrounded with Quality Tenants
- Great Access & Visibility w/ Unmatched Level of Consumer Traffic
- Nearby access to Highway 65 on/off ramps
- Visible Building Signage Available

OFFERING SUMMARY

Building Size:	4,500 SF
Bottom Floor:	±2,250 SF
Top Floor:	±2,250 SF
Lot Size:	0.05 Acres
Number of Units:	2
Market:	Visalia/Porterville
Submarket:	Farmersvle/Exeter/Lindsay
Cross Streets:	Pine St & E St
APN:	135-134-010

We obtained the information above from sources we believe to be reliable. However, we have not verified its accuracy and make no guarantee, warranty or representation about it. It is submitted subject to the possibility of errors, omissions, change of price, rental or other conditions, prior sale, lease or financing, or withdrawal without notice. We include projections, opinions, assumptions or estimates for example only, and they may not represent current or future performance of the property. You and your tax and legal advisors should conduct your own investigation of the property and transaction.

JARED ENNIS

Executive Vice President
O: 559.705.1000
jared@centralcacommercial.com
CA #01945284

KEVIN LAND

Executive Managing Director
O: 559.705.1000
kevin@centralcacommercial.com
CA #01516541

KW COMMERCIAL
7520 N. Palm Ave #102
Fresno, CA 93711

Each Office Independently Owned and Operated **CentralCaCommercial.com**

OFFICE FOR LEASE

PROFESSIONAL FIRST CLASS OFFICE SPACE IN EXETER, CA

216 E Pine St, Exeter, CA 93221



PROPERTY DESCRIPTION

(2) office spaces on top & bottom floor located directly off CA-65 in Exeter, CA. The spaces feature a functional layout offering multiple flexible configurations. Each level offers private offices, open areas, & private restrooms. Prime location offering ample parking and easy access to Highway 65 off/on ramps. The building features ample street parking on both the north & west side of the building along Pine St & E St.



LOCATION DESCRIPTION

Attractive building offering strong demographics and traffic generators. Nearby CA-65 & 198 Freeways connect to all parts of central CA. On Pine Street just east of E Street, west of D Street, & north of Maple Street in Exeter, CA. Exeter is a city in Tulare County, California, United States. It is situated in the San Joaquin Valley near the foothills of the Sierra Nevada. Exeter is located on State Highway 65, 2 miles south of Highway 198 and 15 miles east of Highway 99. Professional manicured grounds and surrounded by lush landscaping with ample private parking. Close access to City Hall, & Exeter's Fire & Police Stations. Surrounding national tenants include McDonalds, Taco Bell, Save mart, Subway, Dollar General, Straw Hat Pizza, Rite Aid, R-N Market, & many others.



We obtained the information above from sources we believe to be reliable. However, we have not verified its accuracy and make no guarantee, warranty or representation about it. It is submitted subject to the possibility of errors, omissions, change of price, rental or other conditions, prior sale, lease or financing, or withdrawal without notice. We include projections, opinions, assumptions or estimates for example only, and they may not represent current or future performance of the property. You and your tax and legal advisors should conduct your own investigation of the property and transaction.

JARED ENNIS

Executive Vice President
O: 559.705.1000
jared@centralcacommercial.com
CA #01945284

KEVIN LAND

Executive Managing Director
O: 559.705.1000
kevin@centralcacommercial.com
CA #01516541

KW COMMERCIAL
7520 N. Palm Ave #102
Fresno, CA 93711

Each Office Independently Owned and Operated CentralCaCommercial.com

OFFICE FOR LEASE

PROFESSIONAL FIRST CLASS OFFICE SPACE IN EXETER, CA

216 E Pine St, Exeter, CA 93221



AVAILABLE SPACES

SUITE	TENANT	SIZE (SF)	LEASE TYPE	LEASE RATE
Bottom Floor	Available	2,250 SF	Modified Gross	\$1.50 SF/month
Top Floor	Available	2,250 SF	Modified Gross	\$1.25 SF/month

We obtained the information above from sources we believe to be reliable. However, we have not verified its accuracy and make no guarantee, warranty or representation about it. It is submitted subject to the possibility of errors, omissions, change of price, rental or other conditions, prior sale, lease or financing, or withdrawal without notice. We include projections, opinions, assumptions or estimates for example only, and they may not represent current or future performance of the property. You and your tax and legal advisors should conduct your own investigation of the property and transaction.

JARED ENNIS
Executive Vice President
O: 559.705.1000
jared@centralcacommercial.com
CA #01945284

KEVIN LAND
Executive Managing Director
O: 559.705.1000
kevin@centralcacommercial.com
CA #01516541

KW COMMERCIAL
7520 N. Palm Ave #102
Fresno, CA 93711

Each Office Independently Owned and Operated CentralCaCommercial.com

OFFICE FOR LEASE

PROFESSIONAL FIRST CLASS OFFICE SPACE IN EXETER, CA

216 E Pine St, Exeter, CA 93221



We obtained the information above from sources we believe to be reliable. However, we have not verified its accuracy and make no guarantee, warranty or representation about it. It is submitted subject to the possibility of errors, omissions, change of price, rental or other conditions, prior sale, lease or financing, or withdrawal without notice. We include projections, opinions, assumptions or estimates for example only, and they may not represent current or future performance of the property. You and your tax and legal advisors should conduct your own investigation of the property and transaction.

JARED ENNIS
Executive Vice President
O: 559.705.1000
jared@centralcacommercial.com
CA #01945284

KEVIN LAND
Executive Managing Director
O: 559.705.1000
kevin@centralcacommercial.com
CA #01516541

KW COMMERCIAL
7520 N. Palm Ave #102
Fresno, CA 93711

Each Office Independently Owned and Operated CentralCaCommercial.com

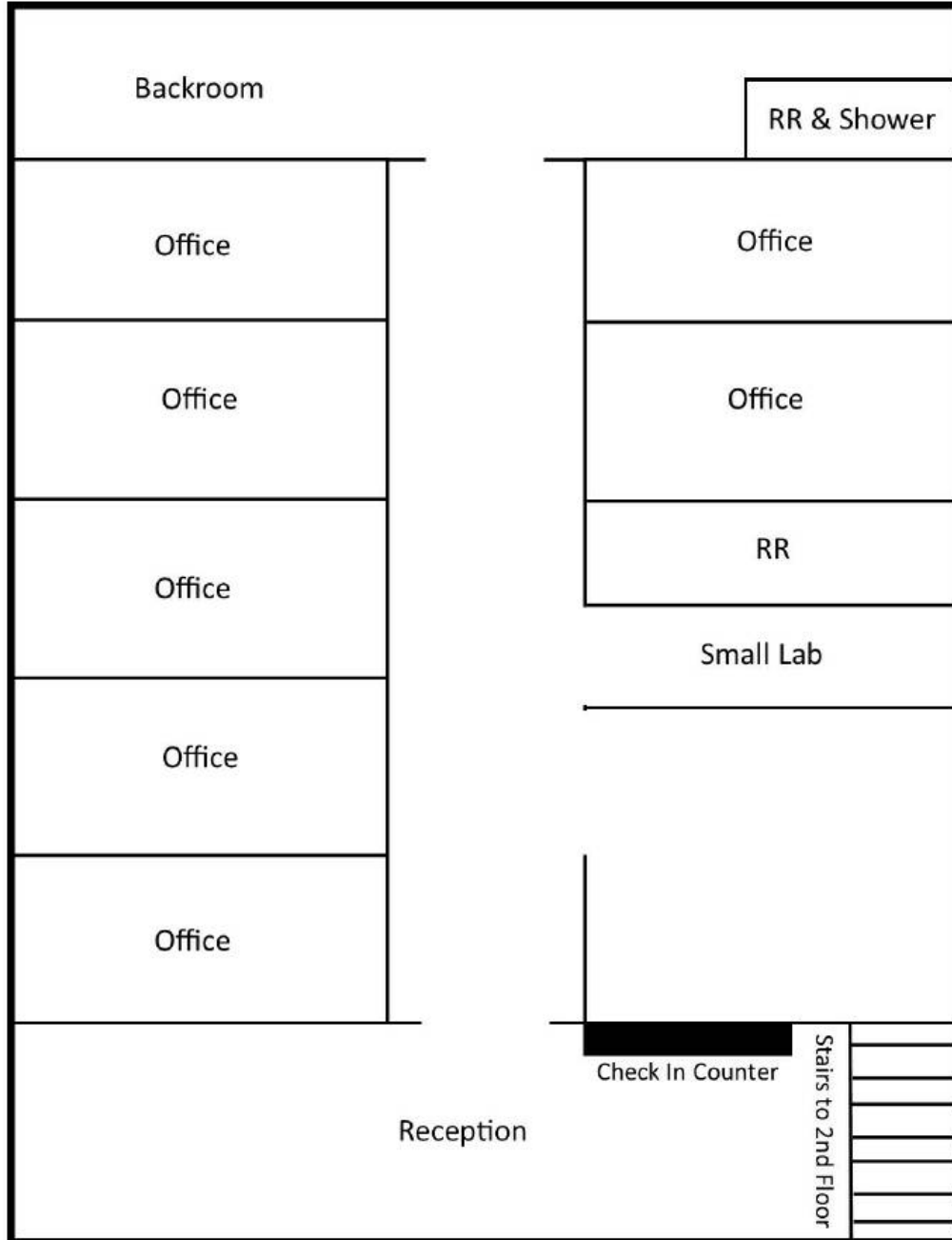
OFFICE FOR LEASE

PROFESSIONAL FIRST CLASS OFFICE SPACE IN EXETER, CA

216 E Pine St, Exeter, CA 93221



Bottom Floor



We obtained the information above from sources we believe to be reliable. However, we have not verified its accuracy and make no guarantee, warranty or representation about it. It is submitted subject to the possibility of errors, omissions, change of price, rental or other conditions, prior sale, lease or financing, or withdrawal without notice. We include projections, opinions, assumptions or estimates for example only, and they may not represent current or future performance of the property. You and your tax and legal advisors should conduct your own investigation of the property and transaction.

JARED ENNIS
Executive Vice President
O: 559.705.1000
jared@centralcacommercial.com
CA #01945284

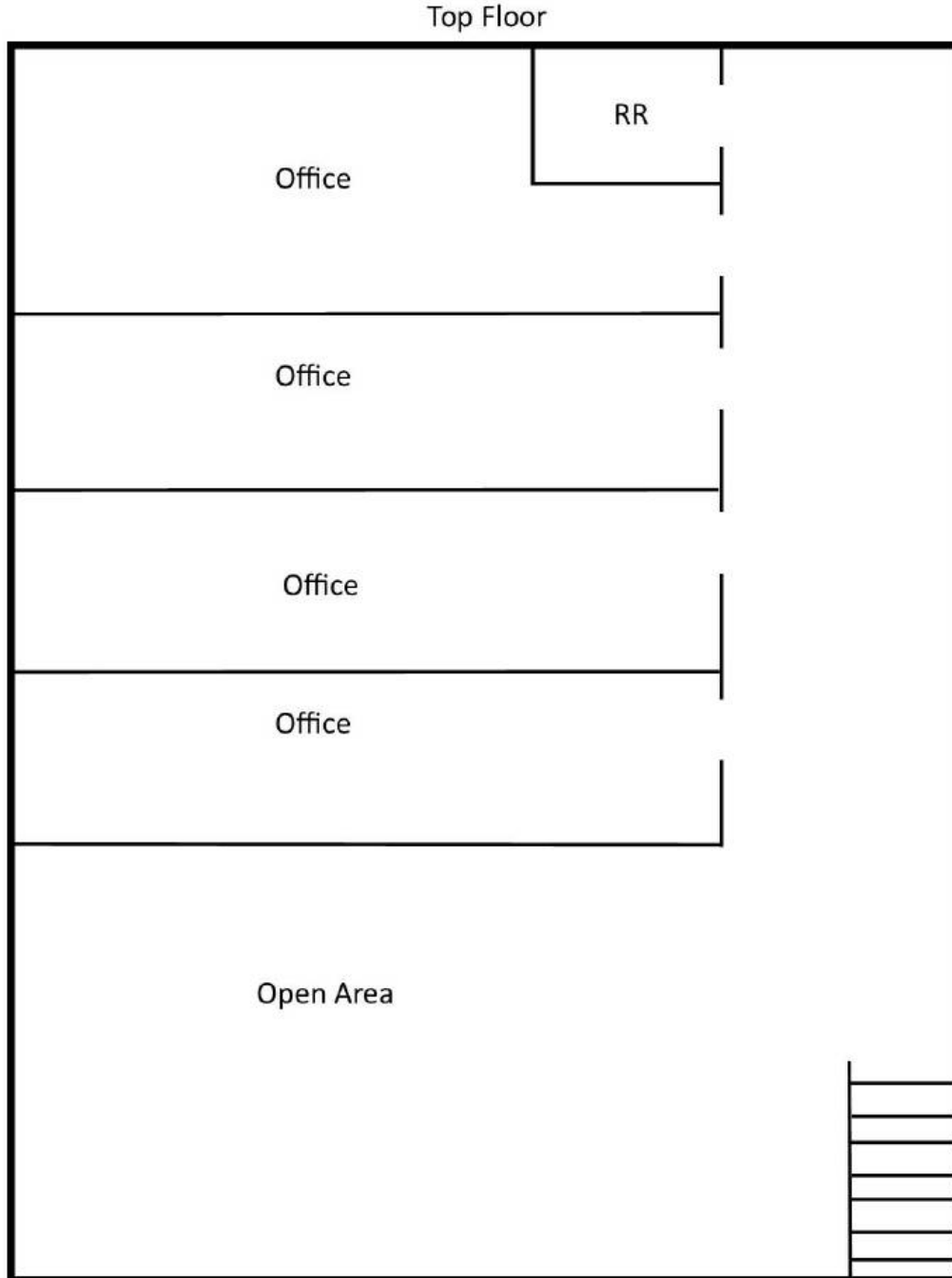
KEVIN LAND
Executive Managing Director
O: 559.705.1000
kevin@centralcacommercial.com
CA #01516541

KW COMMERCIAL
7520 N. Palm Ave #102
Fresno, CA 93711

OFFICE FOR LEASE

PROFESSIONAL FIRST CLASS OFFICE SPACE IN EXETER, CA

216 E Pine St, Exeter, CA 93221



We obtained the information above from sources we believe to be reliable. However, we have not verified its accuracy and make no guarantee, warranty or representation about it. It is submitted subject to the possibility of errors, omissions, change of price, rental or other conditions, prior sale, lease or financing, or withdrawal without notice. We include projections, opinions, assumptions or estimates for example only, and they may not represent current or future performance of the property. You and your tax and legal advisors should conduct your own investigation of the property and transaction.

JARED ENNIS
Executive Vice President
O: 559.705.1000
jared@centralcacommercial.com
CA #01945284

KEVIN LAND
Executive Managing Director
O: 559.705.1000
kevin@centralcacommercial.com
CA #01516541

KW COMMERCIAL
7520 N. Palm Ave #102
Fresno, CA 93711

OFFICE FOR LEASE

PROFESSIONAL FIRST CLASS OFFICE SPACE IN EXETER, CA

216 E Pine St, Exeter, CA 93221



We obtained the information above from sources we believe to be reliable. However, we have not verified its accuracy and make no guarantee, warranty or representation about it. It is submitted subject to the possibility of errors, omissions, change of price, rental or other conditions, prior sale, lease or financing, or withdrawal without notice. We include projections, opinions, assumptions or estimates for example only, and they may not represent current or future performance of the property. You and your tax and legal advisors should conduct your own investigation of the property and transaction.

JARED ENNIS
Executive Vice President
O: 559.705.1000
jared@centralcacommercial.com
CA #01945284

KEVIN LAND
Executive Managing Director
O: 559.705.1000
kevin@centralcacommercial.com
CA #01516541

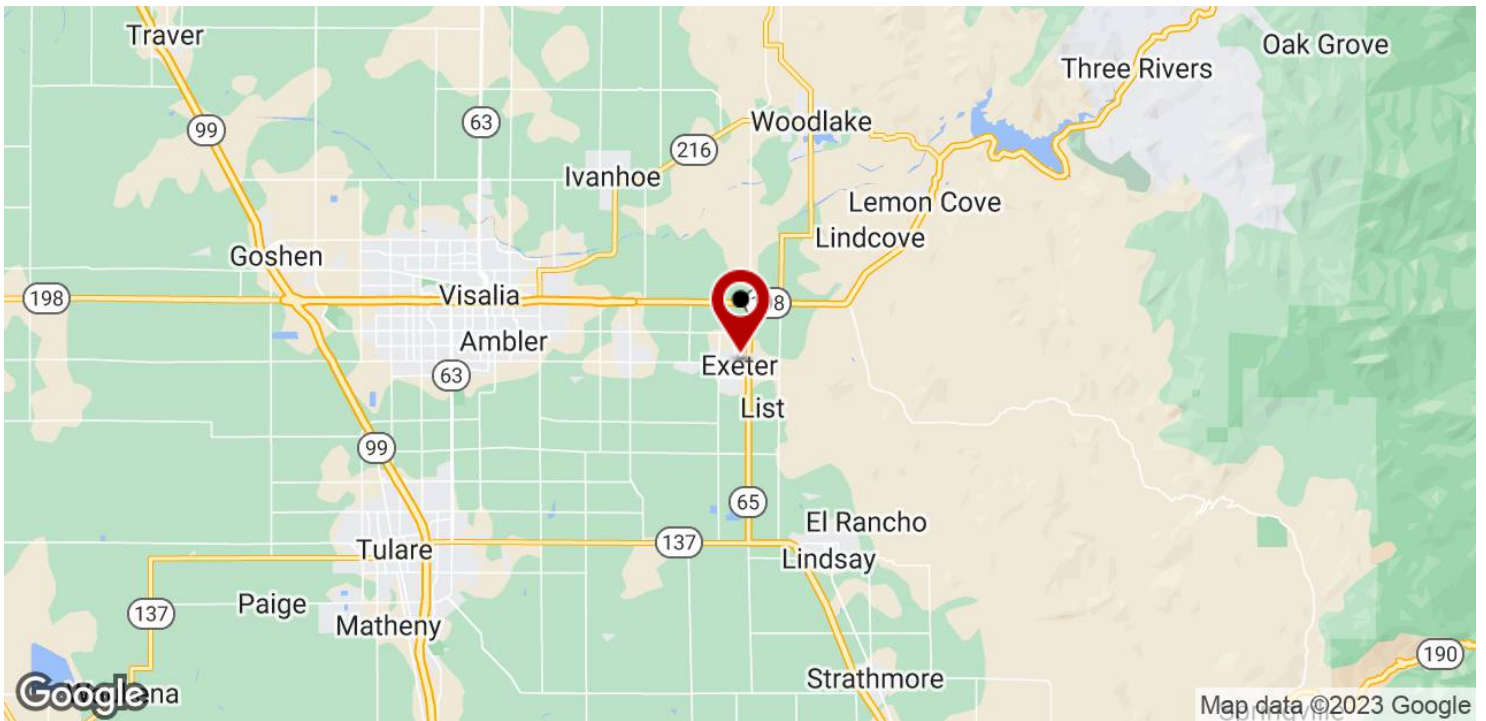
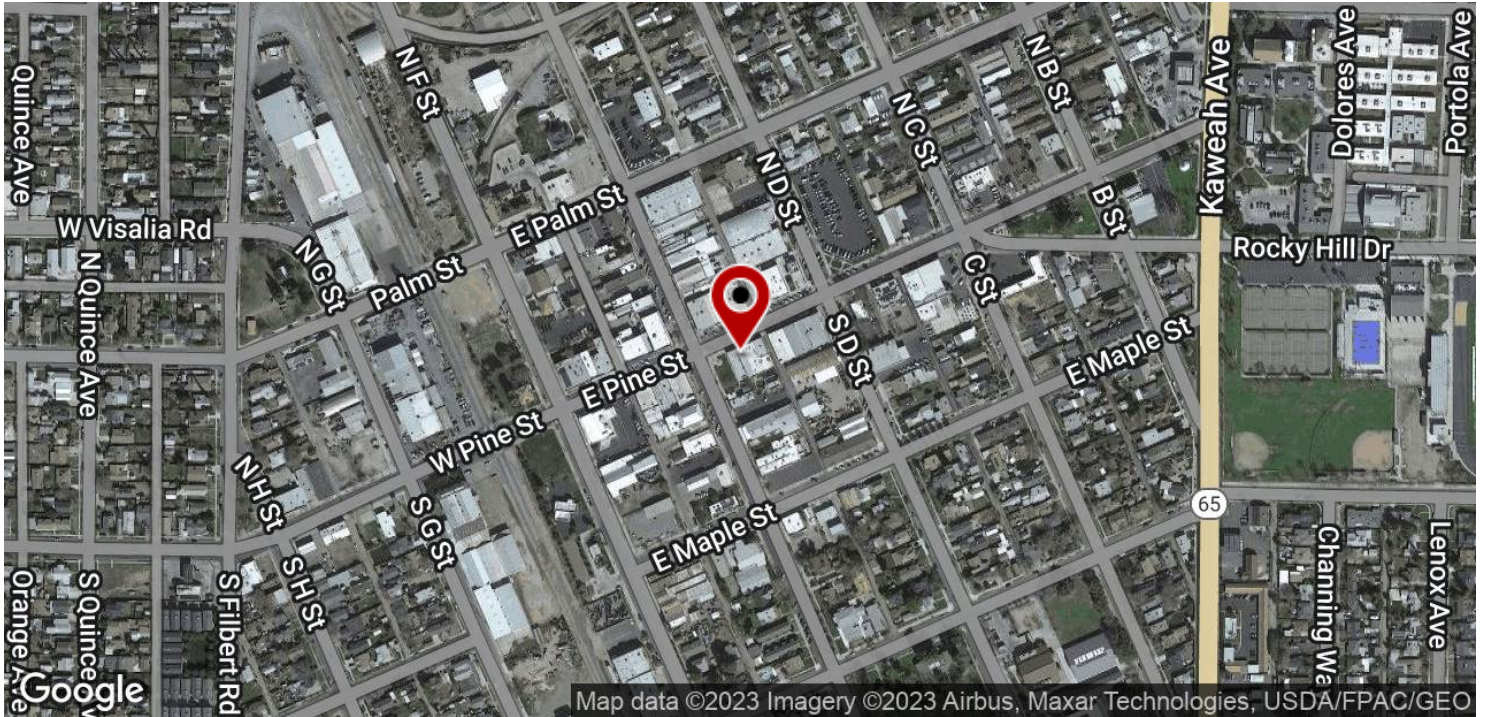
KW COMMERCIAL
7520 N. Palm Ave #102
Fresno, CA 93711

Each Office Independently Owned and Operated CentralCaCommercial.com

OFFICE FOR LEASE

PROFESSIONAL FIRST CLASS OFFICE SPACE IN EXETER, CA

216 E Pine St, Exeter, CA 93221



We obtained the information above from sources we believe to be reliable. However, we have not verified its accuracy and make no guarantee, warranty or representation about it. It is submitted subject to the possibility of errors, omissions, change of price, rental or other conditions, prior sale, lease or financing, or withdrawal without notice. We include projections, opinions, assumptions or estimates for example only, and they may not represent current or future performance of the property. You and your tax and legal advisors should conduct your own investigation of the property and transaction.

JARED ENNIS
Executive Vice President
O: 559.705.1000
jared@centralcommercial.com
CA #01945284

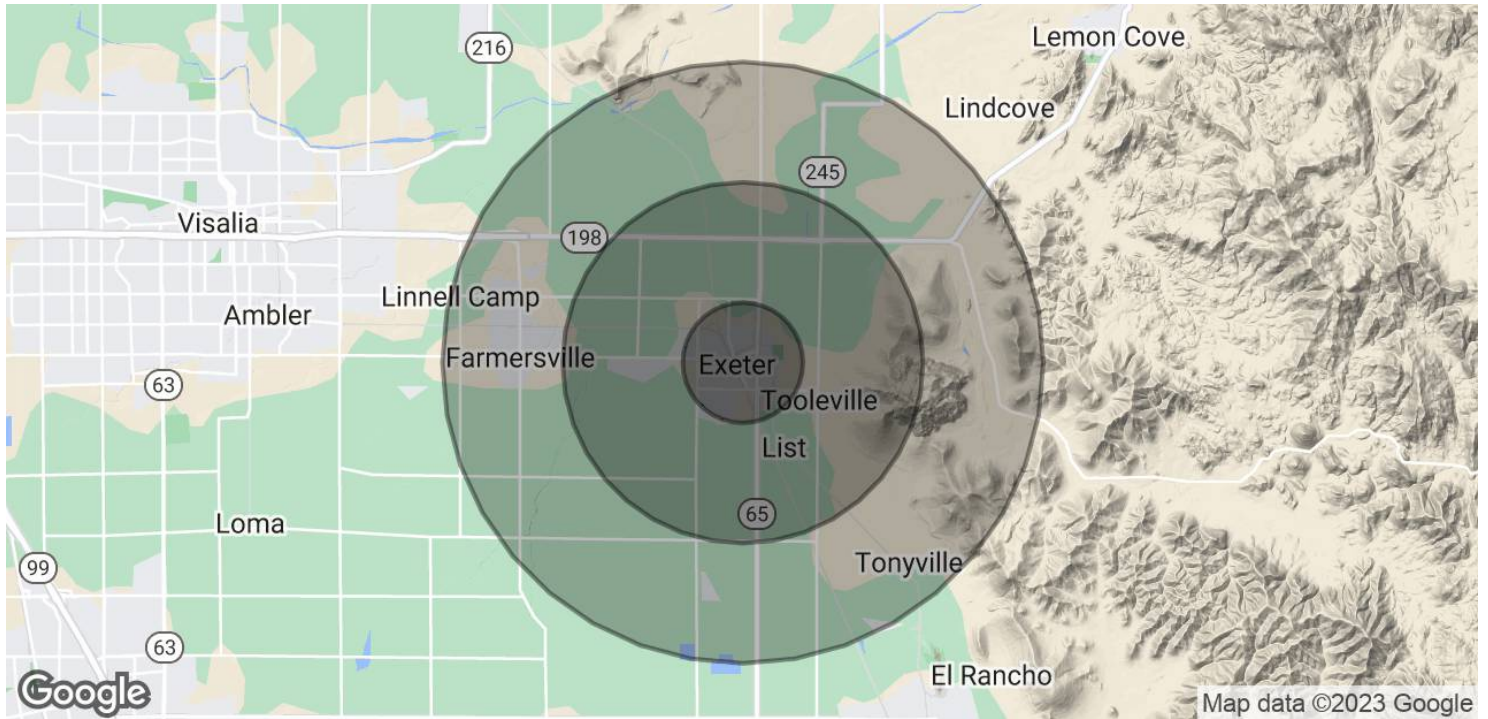
KEVIN LAND
Executive Managing Director
O: 559.705.1000
kevin@centralcommercial.com
CA #01516541

KW COMMERCIAL
7520 N. Palm Ave #102
Fresno, CA 93711

OFFICE FOR LEASE

PROFESSIONAL FIRST CLASS OFFICE SPACE IN EXETER, CA

216 E Pine St, Exeter, CA 93221



	1 MILE	3 MILES	5 MILES
POPULATION			
Total Population	7,112	12,662	26,410
Average Age	34.6	37.7	35.1
Average Age (Male)	30.6	35.0	33.5
Average Age (Female)	37.1	39.7	36.5
HOUSEHOLDS & INCOME			
Total Households	2,602	4,652	8,731
# of Persons per HH	2.7	2.7	3.0
Average HH Income	\$61,000	\$71,183	\$66,153
Average House Value	\$271,247	\$299,595	\$253,786
ETHNICITY (%)			
Hispanic	48.4%	48.5%	65.0%

* Demographic data derived from 2020 ACS - US Census

We obtained the information above from sources we believe to be reliable. However, we have not verified its accuracy and make no guarantee, warranty or representation about it. It is submitted subject to the possibility of errors, omissions, change of price, rental or other conditions, prior sale, lease or financing, or withdrawal without notice. We include projections, opinions, assumptions or estimates for example only, and they may not represent current or future performance of the property. You and your tax and legal advisors should conduct your own investigation of the property and transaction.

JARED ENNIS
Executive Vice President
O: 559.705.1000
jared@centralcacommercial.com
CA #01945284

KEVIN LAND
Executive Managing Director
O: 559.705.1000
kevin@centralcacommercial.com
CA #01516541

KW COMMERCIAL
7520 N. Palm Ave #102
Fresno, CA 93711